

# Flood Inundation Mapping, Colombo District, Sri Lanka

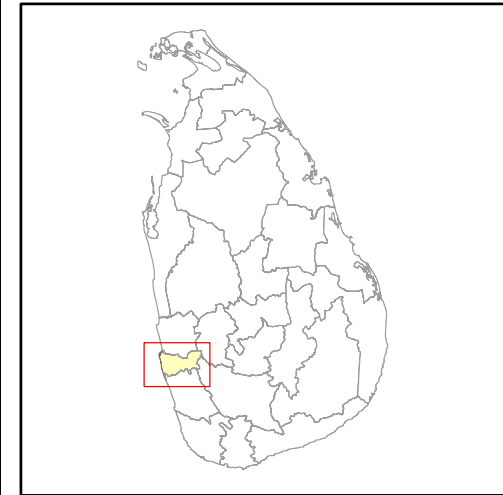
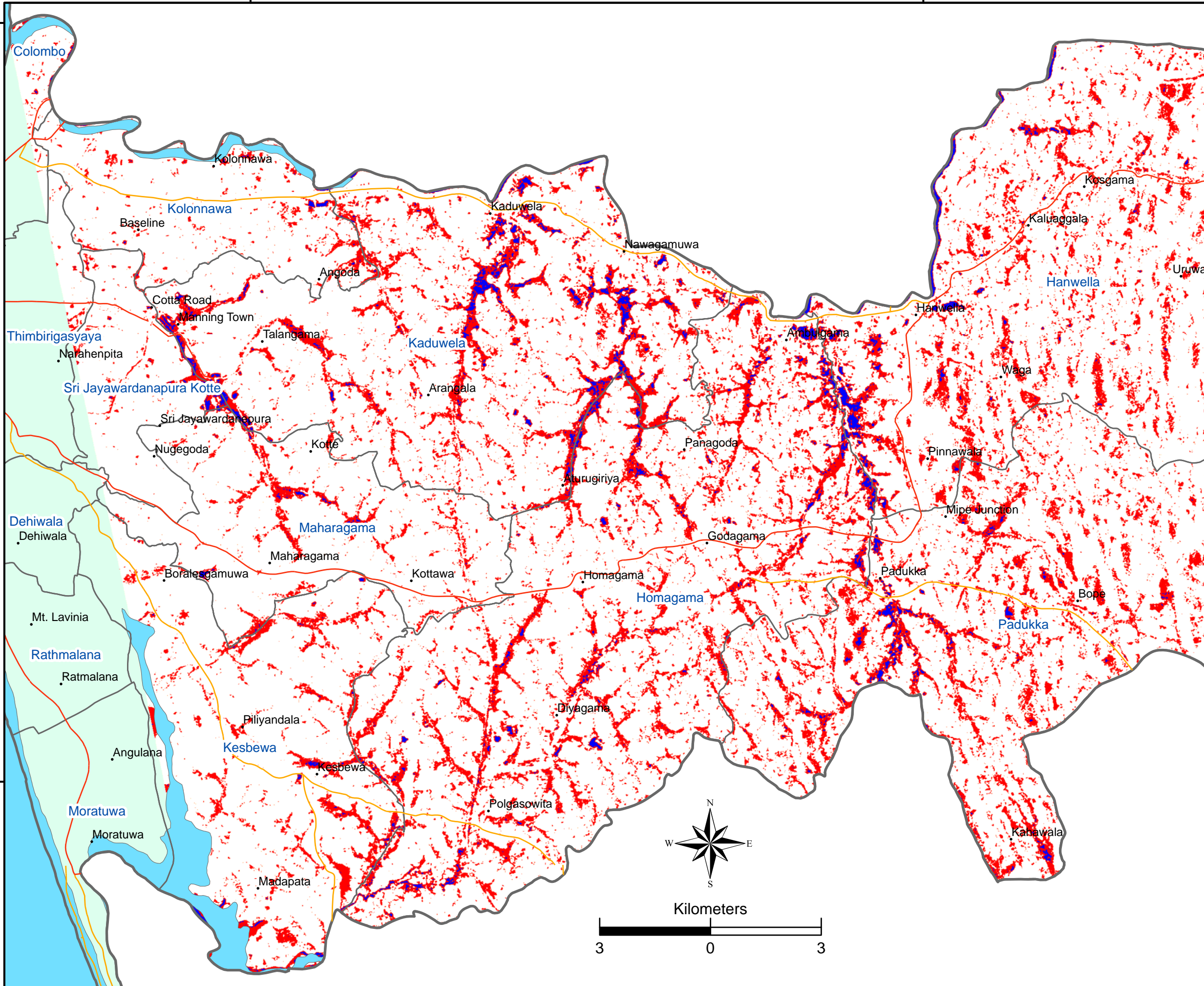
Flood Inundation as at 18th May 2010

79°55'40"E

80°5'30"E

6°58'45"N

6°47'40"N



### Legend

- Major Roads
- Minor Roads
- DS Boundary

**Inndation**

- Flood Inundation
- Pre Flood Standing Water
- No data

Data Source:  
ALOS Palsar 1.5 data products, by  
Japanese Aerospace Exploration Agency  
(JAXA)

Resolution: 6.3 m ground resolution

Observation Dates :  
Flood Event - 18th May 2010  
Pre Flood - 09th March 2010

Satellite Activation by:  
Sentinel Asia Secretariat with cooperation of  
Asian Disaster Reduction Centre (ADRC)

Base Data:  
Department of Survey and Mapping, Sri Lanka.

Map Analyzed by:  
GIS Unit of Disaster Management Centre,  
Ministry of Disaster Management, Sri Lanka

Version 1.0 - 21st May 2010

