



Health Sector Preparedness for the South West Monsoon Season 2024



Dr. Samiddhi Samarakoon

National Coordinator

Disaster Preparedness & Response Division


Ministry of Health

Health Related Issues Expected During Monsoon

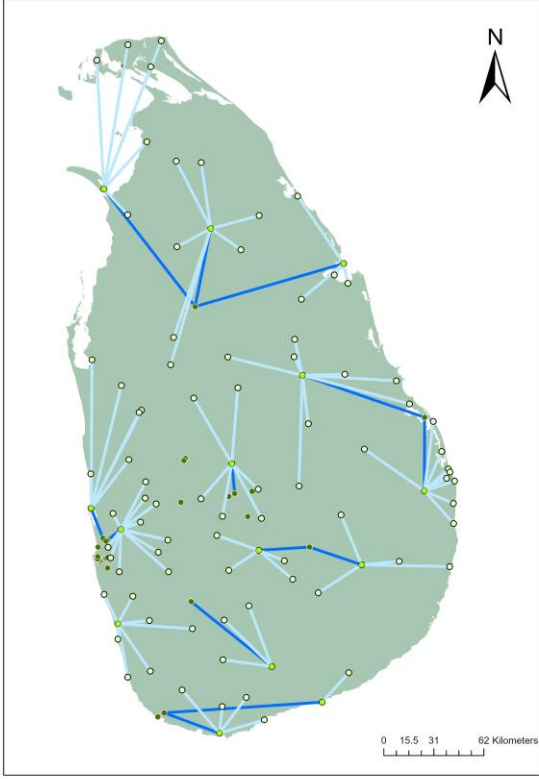
- Injuries and deaths following landslides and floods.
- Possible Dengue and Leptospirosis outbreaks.
- Possible food and water borne outbreaks following floods.



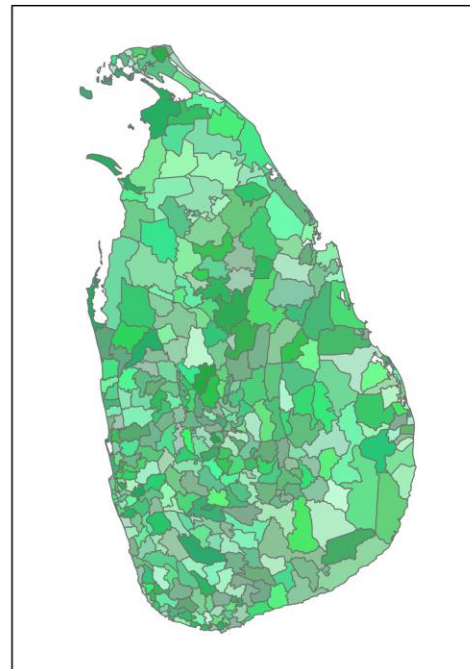
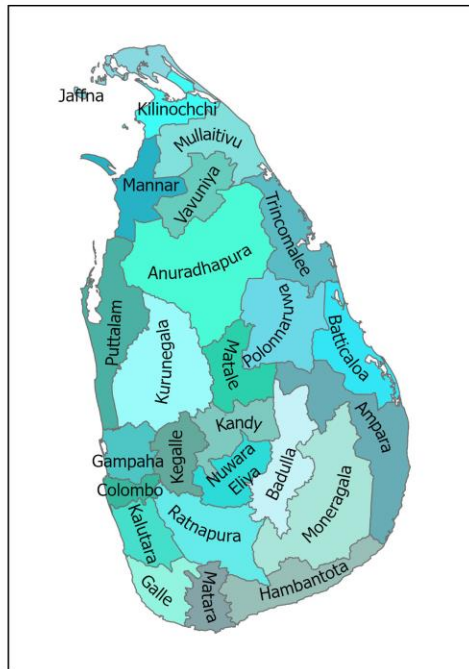
Tiered Hospital Network with Referral and Back Referral Mechanism

| | | | | |
|--|--------------------------------|-------|---|--|
|  | • National Hospitals | - 02 | } | Specialized Care Available (Total - 126) |
| | • Teaching Hospitals | - 11 | | |
| | • Special Hospitals | - 12 | | |
| | • District General Hospitals | - 19 | | |
| | • Provincial General Hospitals | - 01 | | |
| | • Base Hospitals (Type-A) | - 35 | | |
| | • Base Hospitals (Type-B) | - 46 | } | Have Non- specialized Doctors (Total - 993) |
| | • District Hospitals (Type-A) | - 66 | | |
| | • District Hospitals (Type-B) | - 147 | | |
| | • District Hospitals (Type-C) | - 266 | | |
| • Primary Medical Care Units | - 514 | | | |

Total Hospitals - 1,119



Health Unit System for Preventive and Promotive Care



- Provincial Director of Health Services – 9
- Regional Director of Health Services – 26
- Medical Officer of Health Offices – 358

Health Sector Disaster Response Organizations

- Disaster Preparedness and Response Division, Ministry of Health
 - Health Emergency Operations Center
- Subnational Health Emergency Operations Centers
(08 – Trincomalee, Puttalam, Kalutara, Rathnapura, Badulla, Jaffna, Kegalle, Polonnaruwa)
- Hospitals
- Technical Agencies
 - Epidemiological Unit - Outbreak Management
 - Family Health Bureau - Maternal and Child Health Care
 - Health Promotion Bureau - Risk Communication
 - Directorate of Mental Health - Psychosocial Support
 - National Dengue Control Unit - Dengue Outbreaks
 - Environmental and Occupational Health Unit - Waste Management
 - Medical Supplies Division - Essential Medicine
- Hundred Focal Points

Health Sector Disaster Preparedness Activities for Better Response

- Establish Health Emergency Operation Cells in All RDHS Level
- Updated All the Focal Points
 - For Health Sector Preparedness and Response Coordination at the National Level
- Recirculate all Relevant SOPs, Guidelines and Circulars
 - Dengue Control Guidelines, Outbreak Management Circulars
- Strengthening the Emergency Medical Teams
 - Strengthening the Emergency Medical Teams in Government Hospitals
 - Strengthening the Coordination with Tri-Forces and Police Emergency Medical Teams

Health Sector Interventions



- Risk Communication
- Management of Casualties
- Management of Dead Bodies
- Advocacy for Healthy Environment for the Displaced
- Management of Infectious Diseases
- Psychosocial Support
- Supply of Essential Medicines

Overview of Dengue Situation

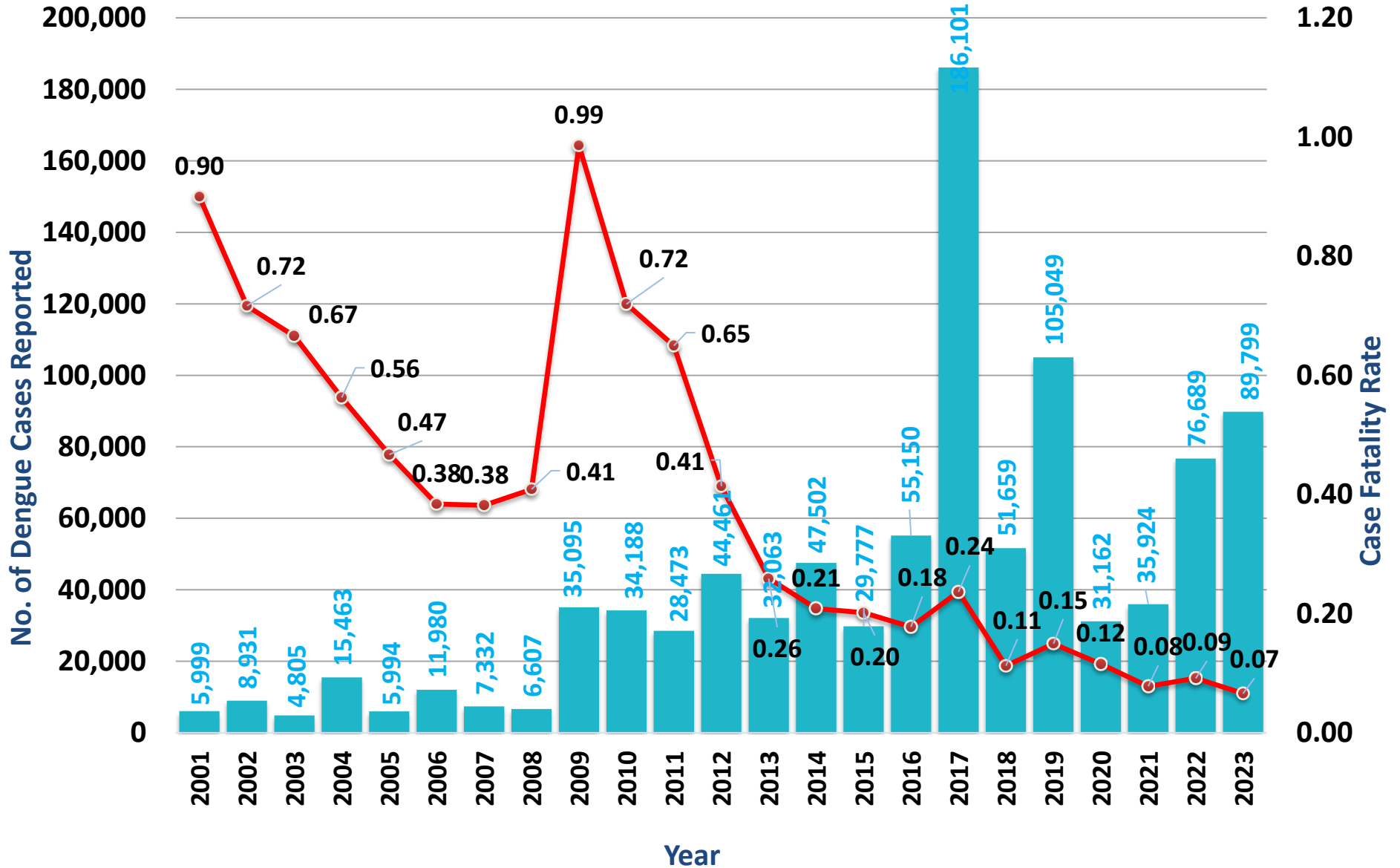


Dengue situation in recent years

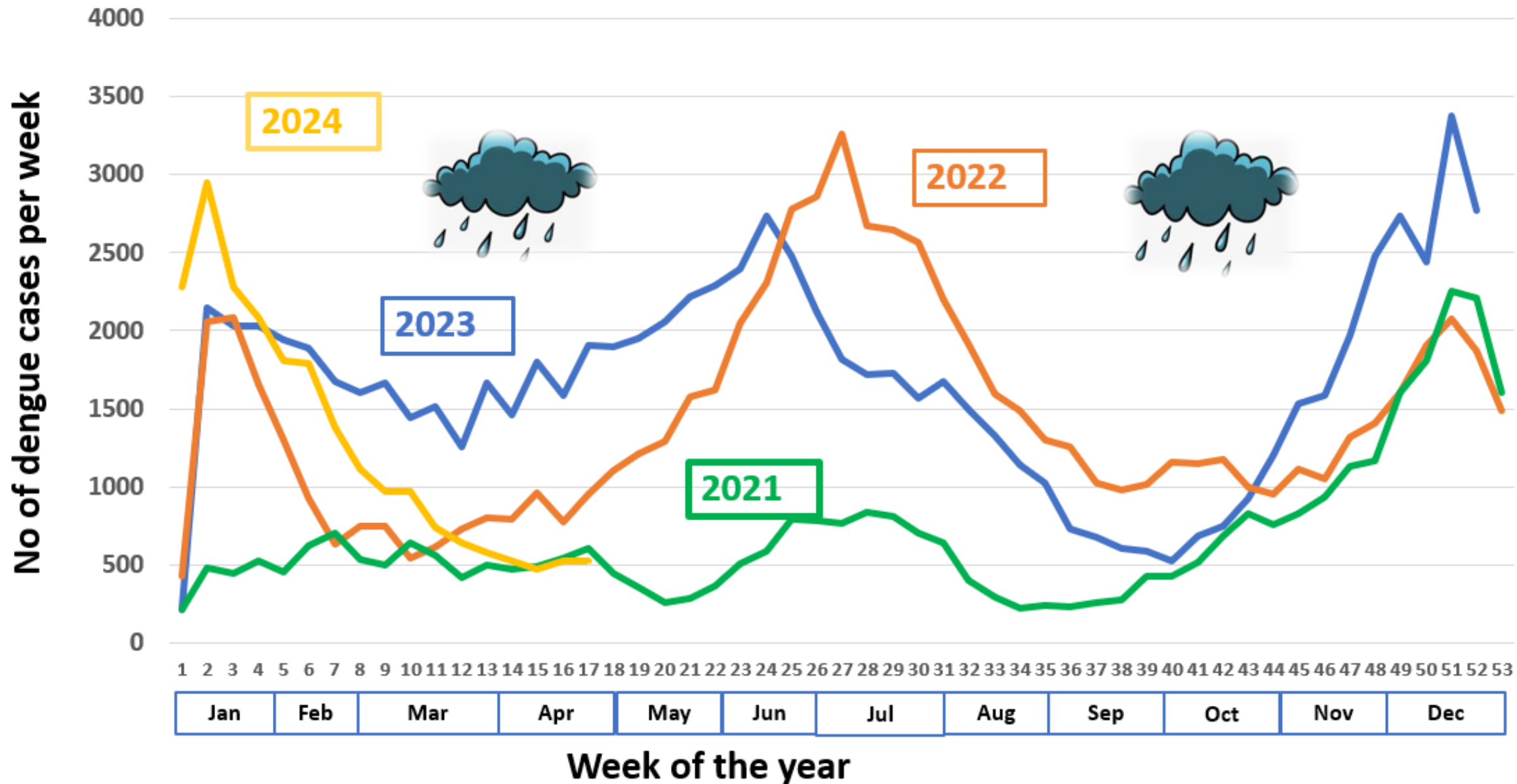
Dengue Cases and Case Fatality Rate

The Trend: 2001 - 2023

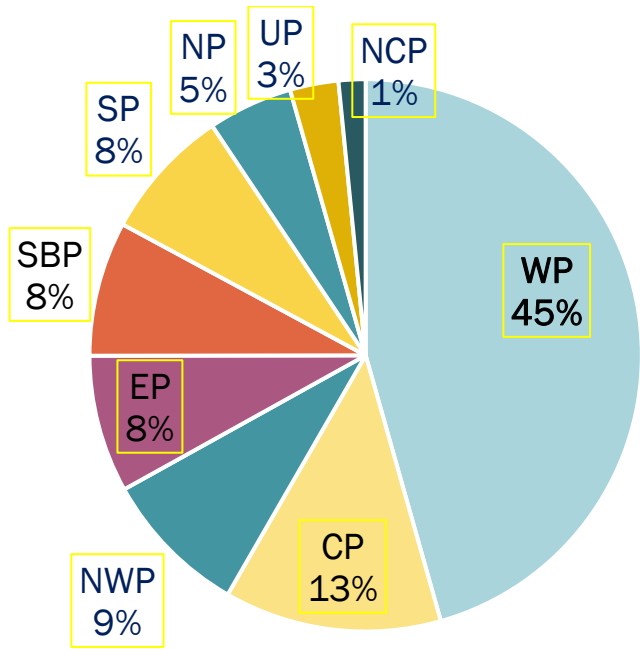
Case Fatality Rate: Number of deaths per 100 dengue cases



Dengue Seasonality



Dengue Notifications by Districts and Provinces 2023



| District | Cases in 2023 | % contribution |
|-------------|---------------|----------------|
| Colombo | 18174 | 21.2 |
| Gampaha | 15836 | 18.5 |
| Kandy | 8885 | 10.4 |
| Kalutara | 5043 | 5.9 |
| Puttalam | 3982 | 4.7 |
| Galle | 3754 | 4.3 |
| Jaffna | 3668 | 4.3 |
| Kegalle | 3506 | 4.1 |
| Kurunegala | 3391 | 4.0 |
| Ratnapura | 3250 | 3.8 |
| Batticaloa | 2805 | 3.3 |
| Trincomalee | 2096 | 2.4 |

| District | Cases in 2023 | % contribution |
|--------------|---------------|----------------|
| Badulla | 1768 | 2.1 |
| Matale | 1749 | 2.0 |
| Kalmunai | 1746 | 2.0 |
| Matara | 1588 | 1.9 |
| Hambantota | 1297 | 1.5 |
| Anuradhapura | 736 | 0.9 |
| Monaragala | 662 | 0.8 |
| Polonnaruwa | 613 | 0.7 |
| Nuwaraeliya | 254 | 0.3 |
| Ampara | 239 | 0.3 |
| Mannar | 173 | 0.2 |
| Vavuniya | 151 | 0.2 |
| Mullaitivu | 145 | 0.2 |
| Kilinochchi | 113 | 0.1 |

Dengue Deaths in Sri Lanka

Dengue Deaths and Case Fatality Rate (CFR) in Sri Lanka
2020 to 2024 (April)

| Year | No of Deaths | No of Cases | CFR (%) |
|-------|--------------|-------------|---------|
| 2022 | 72 | 76689 | 0.09 |
| 2023 | 62 | 89799 | 0.07 |
| 2024* | 9 | 21490 | 0.04 |

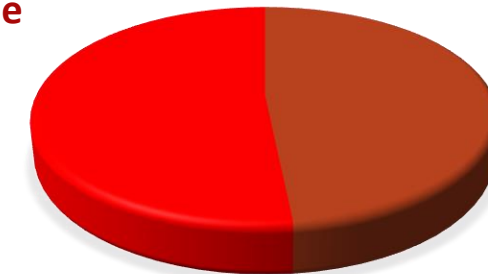
* Up to 30 April 2024

Dengue Deaths 2023

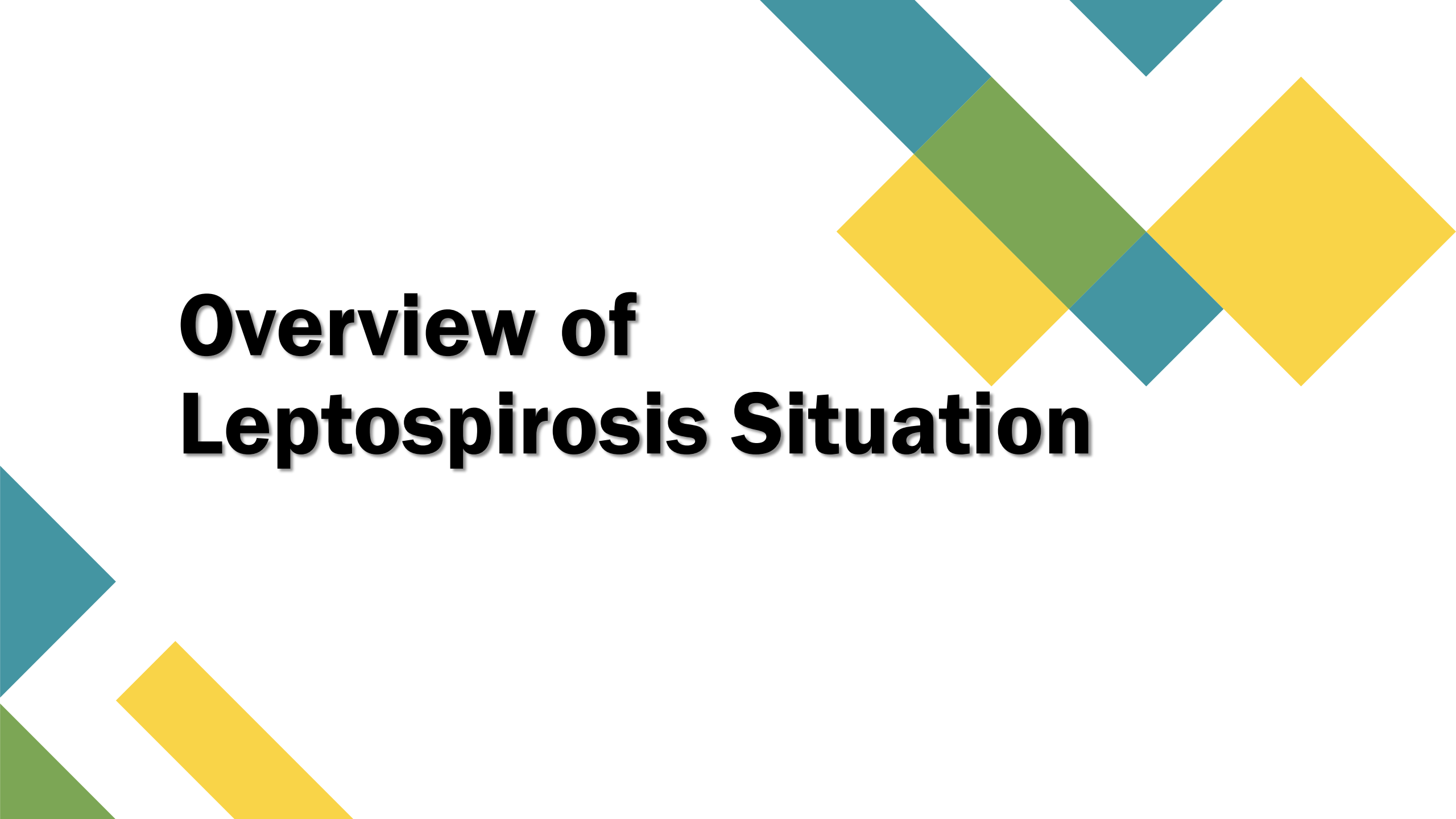
{69.4%}

| Age (Yrs) | Deaths | % |
|--------------|-----------|--------------|
| <1 | 2 | 3.2 |
| 1 - 4 | 3 | 4.8 |
| 5 - 19 | 6 | 9.7 |
| 20-34 | 20 | 32.3 |
| 35-49 | 16 | 25.8 |
| 50-64 | 7 | 11.3 |
| ≥65 | 8 | 12.9 |
| Total | 62 | 100.0 |

Female
52%



Male
48%

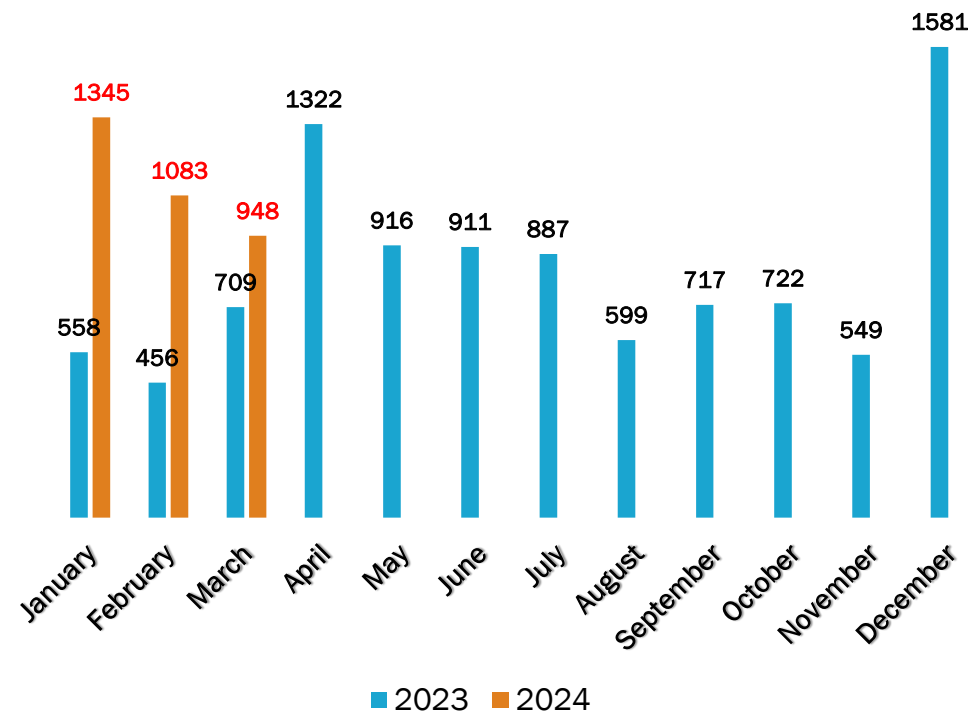
The background features several overlapping geometric shapes: a teal triangle at the top left, a yellow triangle at the top right, a green triangle at the top center, a teal triangle at the bottom left, and a yellow triangle at the bottom center. The text is centered on the left side of the page.

Overview of Leptospirosis Situation

Leptospirosis Confirmed Cases 2023/2024

| Year | Number of Cases | Number of deaths |
|------|-----------------|------------------|
| 2023 | 9,927 | 203 |
| 2024 | 3,376 | - |

* Up to 31 March 2024



High Risk Districts in 2023

1. Rathnapura
2. Galle
3. Kalutara
4. Kegalle
5. Monaragala



Thank You