



## Locations for Potential Risk

නගයලුම් අවදනම පවතිය හකි ප්‍රදේශ කනතියාන අපායமுள்ள இடங்கள்

District	Level 1 (Yellow)	Level 2 (Amber)	Level 3 (Red)
Colombo	Seethawaka Divisional Secretariat Division(s) (DSD) and surrounding areas.		
Galle		Nagoda, Yakkalamulla, Neluwa and Elpitiya  Divisional Secretariat Division(s) (DSD) and surrounding areas.	
Kalutara	Palindanuwara, Dodangoda, Agalawatta and Walallawita  Divisional Secretariat Division(s) (DSD) and surrounding areas.	Mathugama and Horana  Divisional Secretariat Division(s) (DSD) and surrounding areas.	Ingiriya and Bulathsinhala  Divisional Secretariat Division(s) (DSD) and surrounding areas.
Kegalle	Galigamuwa, Kegalle and Aranayaka  Divisional Secretariat Division(s) (DSD) and surrounding areas.	Ruwanwella, Warakapola, Yatyanthota, Deraniyagala, Dehiowita and Bulathkohupitiya  Divisional Secretariat Division(s) (DSD) and surrounding areas.	
Matara	Athuraliya  Divisional Secretariat Division(s) (DSD) and surrounding areas.	Pitabeddara  Divisional Secretariat Division(s) (DSD) and surrounding areas.	
Nuwara Eliya	Ambagamuwa  Divisional Secretariat Division(s) (DSD) and surrounding areas.		
Ratnapura	Pelmadulla  Divisional Secretariat Division(s) (DSD) and surrounding areas.	Kiriella, Ayagama, Nivithigala, Ratnapura and Kuruwita  Divisional Secretariat	Eheliyagoda, Kalawana and Elapatha  Divisional Secretariat Division(s) (DSD) and surrounding areas.

		Division(s) (DSD) and surrounding areas.	
--	--	--	--

**Note:** ↑shifted one level up, ↑↑shifted two levels up, ↓shifted one level down, ↓↓shifted two levels down.  
 \*newly added with the last update  
**Special Note:** These warning levels are issued based on the cumulative rainfall received to respective areas and given weather forecast by meteorological department of Sri Lanka

**Areas and places which need special attention**

All mountainous areas, manmade cut slopes and roads within the relevant DS divisions

අදාළ ප්‍රදේශීය ලේකම් කෙටිදිග නැගෙනහිර පිහිටි කඳුකර බඩුම් හා ආශ්‍රිත ප්‍රදේශ නැගෙනහිර පිහිටි නිර්මිත

பிரதேச செயலக பிரிவினாள்ளான சகல மலைப்பாங்கான பகுதிகள் மற்றும் வெட்டப்பட்ட நிலச் சாய்வுகள்

**Specially:** All the landslide susceptible areas previously identified by NBRO.

**විශේෂ:** ජනිත ගෙඩනලිලි පර්යේෂණ සංවිධානය විසින් නැගෙනහිර අවදානමක් ඇති ලෙස පූර්වයෙන් හඳුනාගෙන ඇති ප්‍රදේශ

**விசேடமாக:** மேசமுவினால் முன்னர் அடையாளப்படுத்தப்பட்ட மண்சரிவுக்கான ஏதநிலையுள்ள சகல பிரதேசங்கள்.

**විශේෂ සටහන:** කරුණාකර මෙම නායයෑම් පිළිබඳ පූර්ව අනතුරු හැඟවීම් කාලසීමාව තුළ පහත කරුණු වෙත ඔබේ අවධානය යොමු කරන්න.

1. පහත දැක්වෙන නායයෑම් පූර්ව ලක්ෂණ පිළිබඳ සැලකිලිමත් වන්න.
  - පොළවේ ඇති වන ඉරි නැලීම්, ගැඹුරට හැරුණු පැළුම් හා පොළවේ ගිරා බැසීම්
  - ක්‍රමයෙන් ඇලවී යන ගස්, විදුලි කණු, වැව්වල් හා දුරකථන කුළුණු ආදිය
  - ගොඩනැගිලිවල ගෙඩිම් හා බිත්තිමත ඇතිවන පිපුරුම් හා ඒවායේ ක්‍රමික වර්ධනය වීම්
  - එක්වර ජල උල්පත් ඇතිවීම හෝ පෙර පැවති ජල උල්පත්බොරවීම, අවහිරවීම හෝ නැතිවීම
2. එවන් නායයාමක පූර්ව ලක්ෂණ දක්නට ලැබෙන ප්‍රදේශ වලින් හැකි ඉක්මනින් ඉවත් වන්න.
3. ඊට අමතරව අනතුරට භාජනය වියහැකි යැයි අනුමාන කරන ප්‍රදේශ වල ජීවත් වන පුද්ගලයින් වැඩි වශයෙන් පරීක්ෂාකාරී වියයුතු අතර දැඩි වර්ෂා තත්වය තවදුරටත් පැවතුනහොත් සුරක්ෂිත ස්ථානයක් කරා ක්ෂණිකව ඉවත්ව යාමට සූදානම්ව සිටිය යුතුය.

**සැ.යු:** ජාතික ගොඩනැගිලි පර්යේෂණ සංවිධානයෙන් සහ ආපදා කළමනාකරණ මධ්‍යස්ථානයෙන් ලැබෙන වැඩිදුර උපදෙස් අනුගමනය කරන්න.

**Special Note:** During this Landslide Early Warning period, please pay attention to the following:

1. Pay your attention to the following pre landslide signs,
  - Development of cracks on the ground, deepened cracks and ground subsidence
  - Slanting of trees, electrical posts, fences and telephone posts
  - Cracks in the floors and walls of buildings which are built at slopes
  - Sudden appearance of springs, emerging muddy water, blockage or disappearance of existing springs
2. People should move immediately away from the areas where they noticed the above pre-landslide signs.
3. Furthermore, people living in landslide susceptible areas should be extra vigilant and should be ready to move quickly to safe places if heavy rain continues.



**Note:** Communities are advised to follow the instructions given by National Building Research Organization and Disaster Management Center.

**විශේෂ குறிப்பு:** மண்சரிவு முன்னெச்சரிக்கை காலப்பகுதியில் பின்வருவனவற்றில் கவனம் எடுக்கவும்

1. பின்வரும் மண்சரிவு முன் அறிகுறிகளையிட்டு கவனத்தை செலுத்தவும்.
  - நிலத்தில் வெடிப்பு உருவாகுதல், ஆழமாகும் வெடிப்புகள் மற்றும் தரை உள்ளிறக்கங்கள்.
  - மரங்கள், மின் கம்பங்கள், வேலிகள், மற்றும் தொலைபேசிக் கம்பங்கள் சாய்வடைதல்.
  - சாய்வுகளில் அமைந்துள்ள கட்டிடங்களின் தரைமற்றும் சுவர்களில் வெடிப்புகள் உருவாகுதல்.
  - நிலத்திலிருந்து திடீரென நீர்நீர்நீர், சேற்று நீர் தோன்றுதல் மற்றும் தற்போதுள்ள நீர்நீர்நீர் தடைப்படுதல் அல்லது இல்லாது போகுதல்.
2. மண்சரிவுக்கு முன்னரான அறிகுறிகளை கொண்ட இடங்களிலிருந்து உடனடியாக மக்கள் அப்பால் நகர வேண்டும்.
3. மேலும், பாதிப்பு ஏதுநிலையுள்ள பகுதிகளில் வாழும் மக்கள் மேலதிக விழிப்புடன் இருக்கவேண்டும் என்பதுடன் கடும் மழை தொருமாயின் விரைவாக பாதுகாப்பான இடங்களுக்கு நகர ஆயத்தமாகவும் இருக்கவேண்டும்.

**குறிப்பு:** தயவுசெய்து தேசிய கட்டிட ஆராய்ச்சி நிறுவனம் மற்றும் அனர்த்த முகாமைத்துவ நிலையம் என்பவற்றின் அறிவுறுத்தல்களை பின்பற்றவும்

Previous Message ID : LEWM-18-08-2024-1600-04

Issued by:	Approved by:	19-08-2024, 16:00 hrs
		Date and time issued
Duty Officer	Director - LRRMD	

Landslide Research and Risk Management Division

National Building Research Organisation

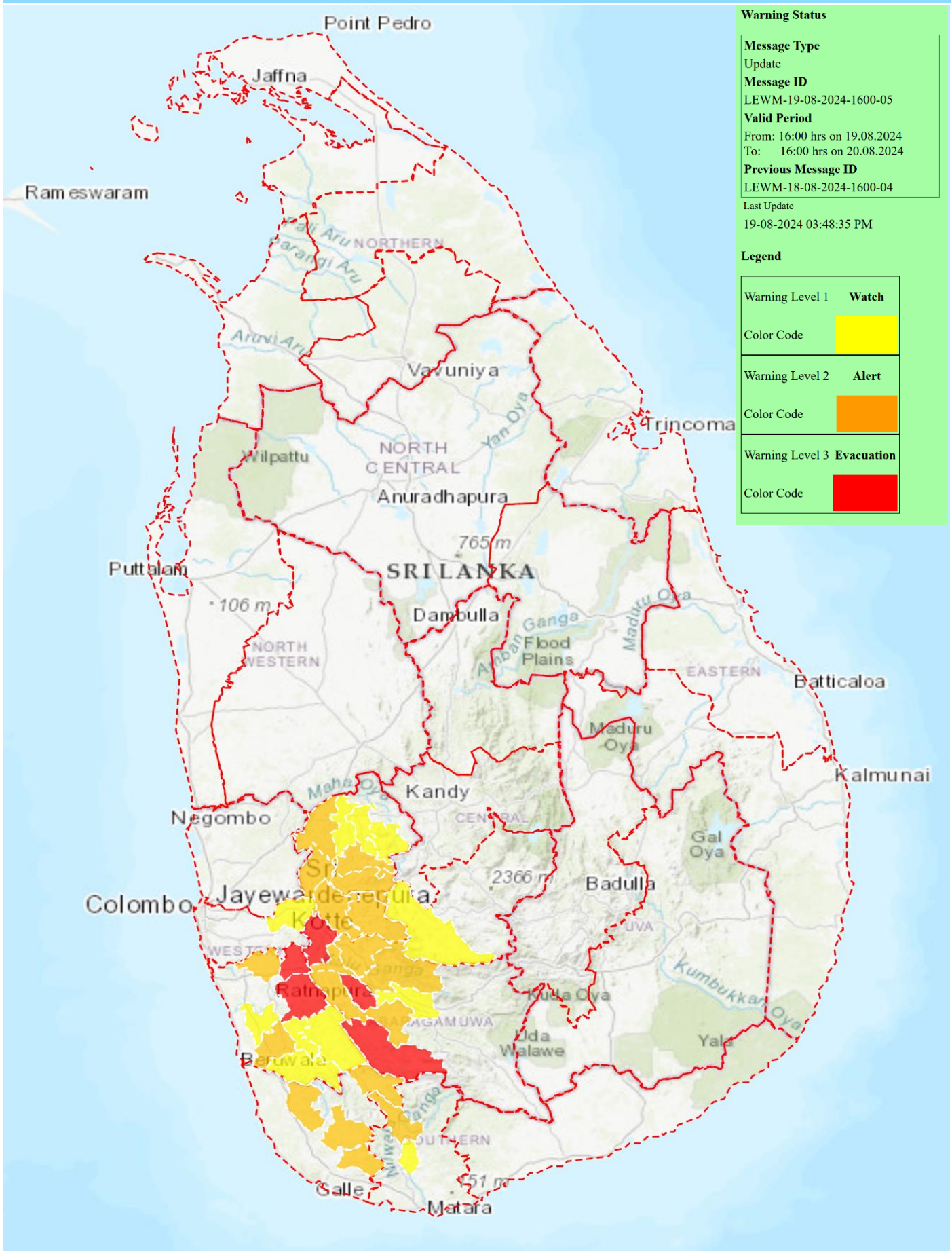




# Automated Landslide Early Warning Map

Landslide Early Warning Center

National Building Research Organisation, Sri Lanka



### Warning Status

**Message Type**  
Update  
**Message ID**  
LEWM-19-08-2024-1600-05  
**Valid Period**  
From: 16:00 hrs on 19.08.2024  
To: 16:00 hrs on 20.08.2024  
**Previous Message ID**  
LEWM-18-08-2024-1600-04  
**Last Update**  
19-08-2024 03:48:35 PM

### Legend

Warning Level 1	<b>Watch</b>
Color Code	
Warning Level 2	<b>Alert</b>
Color Code	
Warning Level 3	<b>Evacuation</b>
Color Code	