

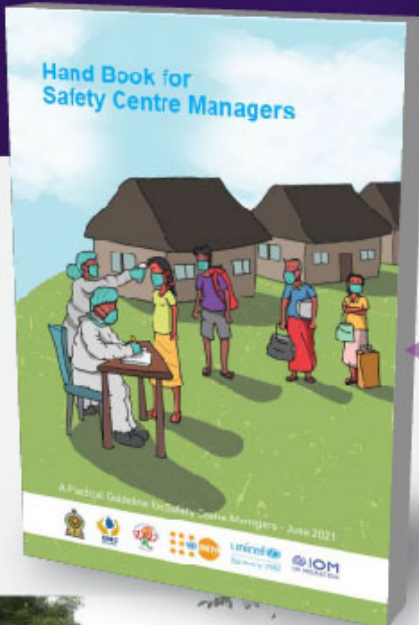
READINESS AND RESPONSE

Managing safety centres

Climate change impact on Sri Lanka is felt severely due to its vulnerability as an island nation along with the changes happening in the country's socioeconomic and development aspects due to increasing population density in key cities. In this backdrop, it is imperative that proactive and detailed planning measures are adopted when setting up safety centres to provide temporary shelter for communities who are likely to get affected, due to probable disasters occurring mainly during adverse weather conditions.

Guidelines in operating safety centres and coping with the risk of COVID-19 pandemic

Pamphlets distributed among officials and vulnerable communities/ public during the South West (IOM sponsored) and North East monsoon seasons (UNDP sponsored)



Hand Book for Safety Centre Managers

A practical guideline for Safety Centre Managers



Response by volunteers (SLRCS)



Rescued people en-route to camps



Camp sites



Much needed humanitarian support provided by: US Embassy, UN organisations such as UNHCR, UNICEF, WFP, UNFPA, UNDP, World Bank and others such as World Vision Lanka, Save the Children, Sri Lanka Red Cross, APAD, FPA, Ceylon Chamber of Commerce during recent natural disasters

Camp management exercise during disaster simulations

