

Message ID: LEWM-22-11-2025-1430-06

Update: 6<sup>th</sup> update

Validity Period: From 14:30 hrs on 22.11.2025 To 14:30 hrs on 23.11.2025

 NBRO	<b>NATIONAL BUILDING RESEARCH ORGANISATION</b> <b>ජාතික ගොඩනැගිලි පර්යේෂණ සංවිධානය</b> தேசிய கட்டிட ஆராய்ச்சி நிறுவனம் No. 99/1, Jawatta Road, Colombo 05. අංක. 99/1, ජාවත්ත පාර, කොළඹ 05. இல. 99/1, ஜாவத்தை வீதி, கொழும்பு 05.
	Tel./දු.ක./தொ.பே - 0112552220      Fax/ෆැක්ස්/தொ.ந - 0112589943

<p><b>Warning level 1:</b> Color Code: Watch Yellow</p> <p>අදියර 1 : වර්ණ කේතය: විමසිලිමත් කහ</p> <p>எச்சரிக்கை மட்டம் 1: வர்ண குறியீடு: அவதானிப்பு மஞ்சள்</p>	<p>Since the rainfall within the past 24 hours has exceeded 75mm, if the rain continues, be watchful on the possibility of landslides, slope failures, rock falls, cutting failures and ground subsidence.</p> <p>පසු ගිය පැය 24 තුළ වර්ෂාපතනය 75mm ඉක්මවා ඇති බැවින්, වර්ෂාව නවදුරටත් පවතී නම් නායයෑමේ, බැවුම් කඩා වැටීමේ, ගල් පෙරළීමේ, පස් කණ්ඩි කඩා වැටීමේ සහ පොළොව ගිරා බැසීමේ අවදානම පිළිබඳව විමසිලිමත් වන්න.</p>
<p><b>Warning level 2:</b> Color Code: Alert Amber</p> <p>අදියර 2 : වර්ණ කේතය: අවධාන ඇමබර්</p> <p>எச்சரிக்கை மட்டம் 2: வர்ண குறியீடு: எச்சரிக்கை செம்மஞ்சள்</p>	<p>Since the rainfall within the past 24 hours has exceeded 100 mm, if the rains continue, be on alert on the possibility of landslides, slope failures, rock falls, cut failures and ground subsidence, being ready to evacuate to a safe location if the need arises.</p> <p>පසුගිය පැය 24 තුළ වර්ෂාපතනය 100 mm ඉක්මවා ඇති බැවින්, වර්ෂාව නවදුරටත් පවතී නම් නායයෑමේ, බැවුම් කඩා වැටීම්, ගල් පෙරළීම්, පොළොව ගිරා බැසීමේ සහ පස් කණ්ඩි කඩා වැටීමේ අවධානම පිළිබඳ අවධානයෙන් සිට අවශ්‍ය වුවහොත් ආරක්ෂාකාරී තැනකට යාමට සූදානම් වන්න.</p>
<p><b>Warning level 3:</b> Color Code: Evacuation Red</p> <p>අදියර 3 : වර්ණ කේතය: ඉවත්වීම රතු</p> <p>எச்சரிக்கை மட்டம் 3: வர்ண குறியீடு: வெளியேறுகை சிவப்பு</p>	<p>Since the rainfall within the past 24 hours has exceeded 150 mm, if the rains continue, evacuate to a safe location to avoid the risk of landslides, slope failures, rock falls, cutting failures and ground subsidence.</p> <p>පසුගිය පැය 24 තුළ වර්ෂාපතනය 150mm ඉක්මවා ඇති බැවින්, වර්ෂාව නවදුරටත් පවතී නම් නායයෑමේ, බැවුම් කඩා වැටීම්, ගල් පෙරළීම්, පොළොව ගිරා බැසීම් සහ පස් කණ්ඩි කඩා වැටීමේ අනතුරු වලින් වැලකීමට ආරක්ෂිත ස්ථානයකට යන්න.</p>

### Locations for Potential Risk

**නායයදුමේ අවදානම ඇවිතිය හැකි ප්‍රදේශ**      **கனதியான அபாயமுள்ள இடங்கள்**

District	Level 1 (Yellow)	Level 2 (Amber)	Level 3 (Red)
Badulla	Bandarawela, Haputhale, Uva Paranagama, Kandaketiya and Haldummulla  Divisional Secretariat Division(s) (DSD) and surrounding areas.		
Colombo	* Padukka  Divisional Secretariat Division(s) (DSD) and surrounding areas.		
Galle		↑ Nagoda  Divisional Secretariat Division(s) (DSD) and surrounding areas.	
Hambantota	* Katuwana  Divisional Secretariat Division(s) (DSD) and surrounding areas.		
Kalutara	Mathugama and Horana  Divisional Secretariat Division(s) (DSD) and surrounding areas.	↑ Ingiriya, Walallawita and ↑ Bulathsinhala  Divisional Secretariat Division(s) (DSD) and surrounding areas.	
Kandy	Pathahewaheta, Thumpane, Ganga Ihala Korale, Ududumbara, Udunuwara, Udupalatha, Gangawata Korale and Pasbage Korale  Divisional Secretariat Division(s) (DSD) and surrounding areas.	↑ Yatinuwara  Divisional Secretariat Division(s) (DSD) and surrounding areas.	
Kegalle	Aranayake, Ruwanwella, Yatyanthota, Rambukkana, Kegalle, Deraniyagala,	↑ Mawanella  Divisional Secretariat Division(s) (DSD) and surrounding areas.	

	Galigamuwa and Warakapola  Divisional Secretariat Division(s) (DSD) and surrounding areas.		
Matara	* Pasgoda  Divisional Secretariat Division(s) (DSD) and surrounding areas.	Pitabeddara and Kotapola  Divisional Secretariat Division(s) (DSD) and surrounding areas.	
Nuwara Eliya	Kotmale and Ambagamuwa  Divisional Secretariat Division(s) (DSD) and surrounding areas.		
Ratnapura	* Embilipitiya, Kiriella, * Openayake and * Weligepola * Kalthota  Divisional Secretariat Division(s) (DSD) and surrounding areas.	Ratnapura, Kolonna, ↑ Kalawana, Ayagama, ↑ Balangoda, Elapatha, ↑ Kahawaththa, ↑ Imbulpe and ↑↑ Nivithigala  Divisional Secretariat Division(s) (DSD) and surrounding areas.	

**Note:** ↑shifted one level up, ↑↑shifted two levels up, ↓shifted one level down, ↓↓shifted two levels down.

\*newly added with the last update

**Special Note:** These warning levels are issued based on the cumulative rainfall received to respective areas and given weather forecast by meteorological department of Sri Lanka

### Areas and places which need special attention

All mountainous areas, manmade cut slopes and roads within the relevant DS divisions

අදාල ප්‍රාදේශීය ලේකම් කොට්ඨාශ තුළ පිහිටි කඳුකර බෑවුම් හා ඒ ආශ්‍රිත ප්‍රදේශ තුළ පිහිටි නිර්මිත

பிரதேச செயலக பிரிவினாள்ளான சகல மலைப்பாங்கான பகுதிகள் மற்றும் வெட்டப்பட்ட நிலச் சாய்வுகள்

**Specially:** All the landslide susceptible areas previously identified by NBRO.

**විශේෂ:** ජාතික ගොඩනැගිලි පර්යේෂණ සංවිධානය විසින් නායයූ මේ අවදානමක් ඇති ලෙස පූර්වයෙන් හඳුනාගෙන ඇති ප්‍රදේශ

**விசேடமாக:** லேசுமுவினால் முன்னர் அடையாளப்படுத்தப்பட்ட மண்சரிவுக்கான ஏதநிலையுள்ள சகல பிரதேசங்கள்.

**විශේෂ සටහන:** කරුණාකර මෙම නායයෑම් පිළිබඳ පූර්ව අනතුරු හැඟවීම් කාලසීමාව තුළ පහත කරුණු වෙත ඔබේ අවධානය යොමු කරන්න.

1. පහත දැක්වෙන නායයෑම් පූර්ව ලක්ෂණ පිළිබඳ සැලකිලිමත් වන්න.
  - පොළවේ ඇති වන ඉරි නැඟීම, ගැඹුරට හැරුණු පැළුම් හා පොළවේ ගිරා බැසීම්
  - ක්‍රමයෙන් ඇලවී යන ගස්, විදුලි කණු, වැව්වල් හා දුරකථන කුළුණු ආදිය
  - ගොඩනැගිලිවල ගෙඩිම හා බිත්තිමත ඇතිවන පිපුරුම් හා ඒවායේ ක්‍රමික වර්ධනය වීම්
  - එක්වර ජල උල්පත් ඇතිවීම හෝ පෙර පැවති ජල උල්පත් බොරවීම, අවහිරවීම හෝ නැතිවීම
2. එවන් නායයාමක පූර්ව ලක්ෂණ දක්නට ලැබෙන ප්‍රදේශ වලින් හැකි ඉක්මනින් ඉවත් වන්න.
3. ඊට අමතරව අනතුරට භාජනය වියහැකි යැයි අනුමාන කරන ප්‍රදේශ වල ජීවත් වන පුද්ගලයින් වැඩි වශයෙන් පරීක්ෂාකාරී වියයුතු අතර දැඩි වර්ෂා තත්වය නවදුරටත් පැවතුනහොත් සුරක්ෂිත ස්ථානයක් කරා ක්ෂණිකව ඉවත්ව යාමට සූදානම්ව සිටිය යුතුය.

**සැ.යු:** ජාතික ගොඩනැගිලි පර්යේෂණ සංවිධානයෙන් සහ ආපදා කළමනාකරණ මධ්‍යස්ථානයෙන් ලැබෙන වැඩිදුර උපදෙස් අනුගමනය කරන්න.

**Special Note:** During this Landslide Early Warning period, please pay attention to the following:

1. Pay your attention to the following pre landslide signs,
  - Development of cracks on the ground, deepened cracks and ground subsidence
  - Slanting of trees, electrical posts, fences and telephone posts
  - Cracks in the floors and walls of buildings which are built at slopes
  - Sudden appearance of springs, emerging muddy water, blockage or disappearance of existing springs
2. People should move immediately away from the areas where they noticed the above pre-landslide signs.
3. Furthermore, people living in landslide susceptible areas should be extra vigilant and should be ready to move quickly to safe places if heavy rain continues.

**Note:** Communities are advised to follow the instructions given by National Building Research Organization and Disaster Management Center.

**විශේෂ குறிப்பு:** மண்சரிவு முன்னெச்சரிக்கை காலப்பகுதியில் பின்வருவனவற்றில் கவனம் எடுக்கவும்

1. பின்வரும் மண்சரிவு முன் அறிகுறிகளையிட்டு கவனத்தை செலுத்தவும்.
  - நிலத்தில் வெடிப்பு உருவாகுதல், ஆழமாகும் வெடிப்புகள் மற்றும் தரை உள்ளிறக்கங்கள்.
  - மரங்கள், மின் கம்பங்கள், வேலிகள், மற்றும் தொலைபேசிக் கம்பங்கள் சாய்வடைதல்.
  - சாய்வுகளில் அமைந்துள்ள கட்டிடங்களின் தரைமற்றும் சுவர்களில் வெடிப்புகள் உருவாகுதல்.
  - நிலத்திலிருந்து திடீரென நீர்நீறுகள், சேற்று நீர் தோன்றுதல் மற்றும் தற்போதுள்ள நீர்நீறுகள் தடைப்படுதல் அல்லது இல்லாது போகுதல்.
2. மண்சரிவுக்கு முன்னரான அறிகுறிகளை கொண்ட இடங்களிலிருந்து உடனடியாக மக்கள் அப்பால் நகர வேண்டும்.
3. மேலும், பாதிப்பு ஏதுநிலையுள்ள பகுதிகளில் வாழும் மக்கள் மேலதிக விழிப்புடன் இருக்கவேண்டும் என்பதுடன் கடும் மழை தொருமாயின் விரைவாக பாதுகாப்பான இடங்களுக்கு நகர ஆயத்தமாகவும் இருக்கவேண்டும்.

**குறிப்பு:** தயவுசெய்து தேசிய கட்டிட ஆராய்ச்சி நிறுவனம் மற்றும் அனர்த்த முகாமைத்துவ நிலையம் என்பவற்றின் அறிவுறுத்தல்களை பின்பற்றவும்

Previous Message ID: LEWM-21-11-2025-2000-05

Issued by:  Duty Officer	Approved by:  Director - LRRMD	22-11-2025, 14:30 hrs Date and time issued
---	---	---

Landslide Research and Risk Management Division

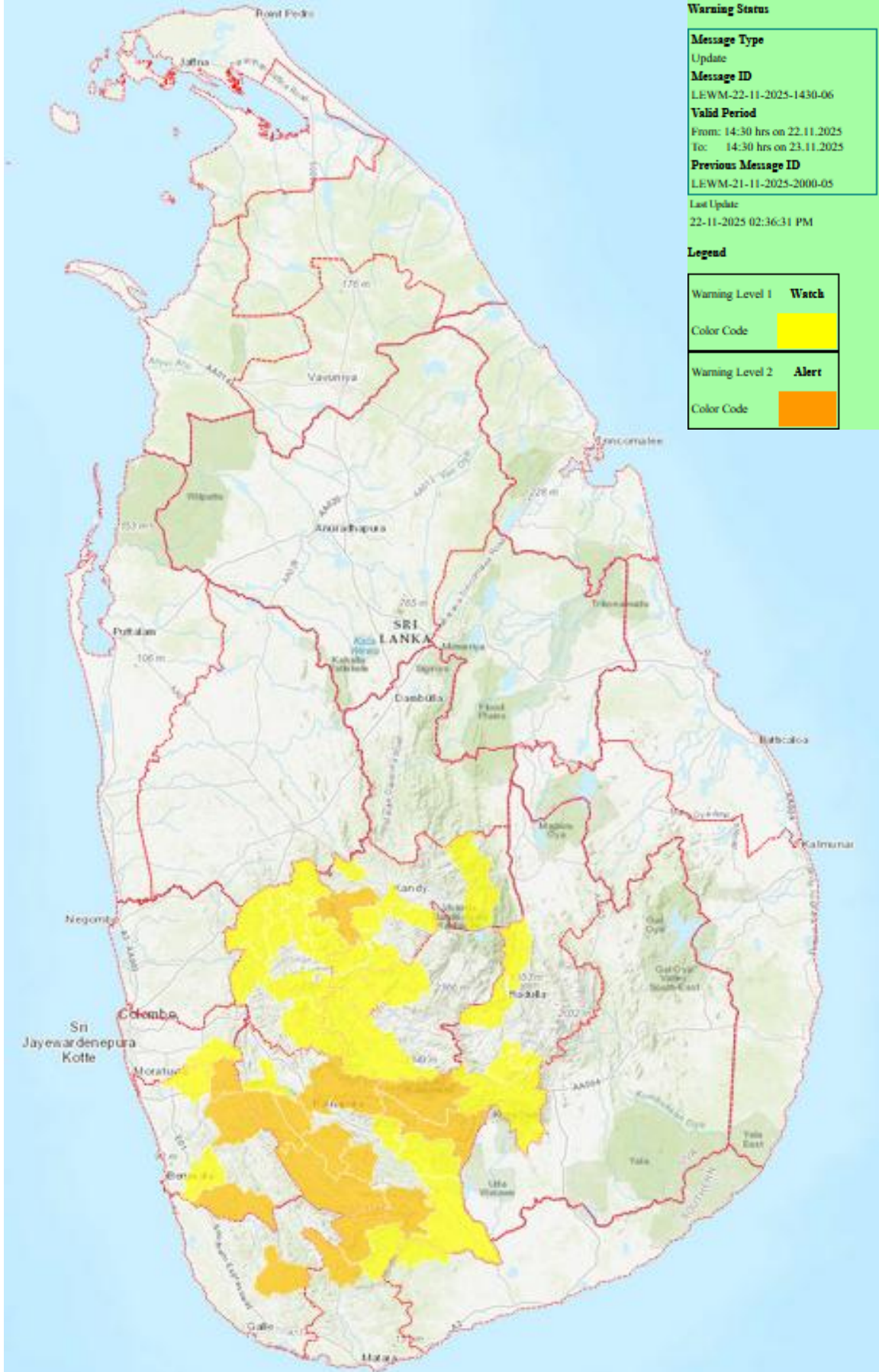
National Building Research Organisation



# Automated Landslide Early Warning Map

Landslide Early Warning Center

National Building Research Organisation, Sri Lanka



## Warning Status

### Message Type

Update

### Message ID

LEWM-22-11-2025-1430-06

### Valid Period

From: 14:30 hrs on 22.11.2025

To: 14:30 hrs on 23.11.2025

### Previous Message ID

LEWM-21-11-2025-2000-05

### Last Update

22-11-2025 02:36:31 PM

## Legend

Warning Level 1 **Watch**

Color Code



Warning Level 2 **Alert**

Color Code

