

Landslide Early Warning

නායයෑම් පිළිබඳ පෙර අනතුරු ඇඟවීම  
மண்சரிவு முன்னெச்சரிக்கை

Message ID: LEWM-03-06-2024-1600-30

Update: 30<sup>th</sup> update

Validity Period: From 16:00 hrs on 03.06.2024 To 16:00 hrs on 04.06.2024

 <b>NBRO</b>	<b>NATIONAL BUILDING RESEARCH ORGANISATION</b> <b>ජාතික ගොඩනැගිලි පර්යේෂණ සංවිධානය</b> தேசிய கட்டிட ஆராய்ச்சி நிறுவனம் No. 99/1, Jawatta Road, Colombo 05. අංක. 99/1, ජාවත්ත පාර, කොළඹ 05. இல. 99/1, ஐவத்தை வீதி, கொழும்பு 05.
	Tel./ද.ක./தொ.பே - 0112552220      Fax/ෆැක්ස්/தொ.ந - 0112589943

<p><b>Warning level 1:</b> <b>Color Code:</b></p> <p>අදියර 1 : වර්ණ කේතය:</p> <p>எச்சரிக்கை மட்டம் 1: வர்ண குறியீடு:</p>	<p><b>Watch</b> <b>Yellow</b></p> <p>විමසිලිමත් කහ</p> <p>அவதானப்பு மஞ்சள்</p>	<p>Since the rainfall within the past 24 hours has exceeded 75mm, if the rain continues, be watchful on the possibility of landslides, slope failures, rock falls, cutting failures and ground subsidence.</p> <p>පසු ගිය පැය 24 තුළ වර්ෂාපතනය 75mm ඉක්මවා ඇති බැවින්, වර්ෂාව නවදුරටත් පවතී නම් නායයෑමේ, බෑවුම් කඩා වැටීමේ, ගල් පෙරළීමේ, පස් කණ්ඩි කඩා වැටීමේ සහ පොළොව හිරා බැසීමේ අවදානම පිළිබඳව විමසිලිමත් වන්න.</p>
<p><b>Warning level 2:</b> <b>Color Code:</b></p> <p>අදියර 2 : වර්ණ කේතය:</p> <p>எச்சரிக்கை மட்டம் 2: வர்ண குறியீடு:</p>	<p><b>Alert</b> <b>Amber</b></p> <p>අවධාන ඇම්බර්</p> <p>எச்சரிக்கை செம்மஞ்சள்</p>	<p>Since the rainfall within the past 24 hours has exceeded 100 mm, if the rains continue, be on alert on the possibility of landslides, slope failures, rock falls, cut failures and ground subsidence, being ready to evacuate to a safe location if the need arises.</p> <p>පසුගිය පැය 24 තුළ වර්ෂාපතනය 100 mm ඉක්මවා ඇති බැවින්, වර්ෂාව නවදුරටත් පවතී නම් නායයෑමේ, බෑවුම් කඩා වැටීමේ, ගල් පෙරළීමේ, පොළොව හිරා බැසීමේ සහ පස් කණ්ඩි කඩා වැටීමේ අවධානම පිළිබඳ අවධානයෙන් සිටි අවශ්‍ය වුවහොත් ආරක්ෂාකාරී තැනකට යාමට සූදානම් වන්න.</p>
<p><b>Warning level 3:</b> <b>Color Code:</b></p> <p>අදියර 3 : වර්ණ කේතය:</p> <p>எச்சரிக்கை மட்டம் 3: வர்ண குறியீடு:</p>	<p><b>Evacuation</b> <b>Red</b></p> <p>ඉවත්වීම රතු</p> <p>வெளியேறுகை சிவப்பு</p>	<p>Since the rainfall within the past 24 hours has exceeded 150 mm, if the rains continue, evacuate to a safe location to avoid the risk of landslides, slope failures, rock falls, cutting failures and ground subsidence.</p> <p>පසුගිය පැය 24 තුළ වර්ෂාපතනය 150mm ඉක්මවා ඇති බැවින්, වර්ෂාව නවදුරටත් පවතී නම් නායයෑමේ, බෑවුම් කඩා වැටීමේ, ගල් පෙරළීමේ, පොළොව හිරා බැසීමේ සහ පස් කණ්ඩි කඩා වැටීමේ අනතුරු වලින් වැලකීමට ආරක්ෂිත ස්ථානයකට යන්න.</p>
<p><b>Warning level 4:</b> <b>Color Code:</b></p> <p>අදියර 4 : වර්ණ කේතය:</p> <p>எச்சரிக்கை மட்டம் 4: வர்ண குறியீடு:</p>	<p><b>Evacuation</b> <b>Red</b></p> <p>ඉවත්වීම රතු</p> <p>வெளியேறுகை சிவப்பு</p>	<p>Since the rainfall within the past 24 hours has exceeded 200 mm, if the rains continue, evacuate to a safe location to avoid the risk of landslides, slope failures, rock falls, cutting failures and ground subsidence, being ready to evacuate to a safe location if the need arises.</p> <p>පසුගිය පැය 24 තුළ වර්ෂාපතනය 200 mm ඉක්මවා ඇති බැවින්, වර්ෂාව නවදුරටත් පවතී නම් නායයෑමේ, බෑවුම් කඩා වැටීමේ, ගල් පෙරළීමේ, පොළොව හිරා බැසීමේ සහ පස් කණ්ඩි කඩා වැටීමේ අනතුරු වලින් වැලකීමට ආරක්ෂිත ස්ථානයකට යන්න.</p>

Message ID: LEWM-03-06-2024-1600-30

Update: 30<sup>th</sup> update

Validity Period: From 16:00 hrs on 03.06.2024 To 16:00 hrs on 04.06.2024

<b>Locations for Potential Risk</b>			
<b>කරයයලුම් අවදානම පවතින හකි ප්‍රදේශ</b> <b>கனதியான அபாயமுள்ள இடங்கள்</b>			
<b>District</b>	<b>Level 1 (Yellow)</b>	<b>Level 2 (Amber)</b>	<b>Level 3 (Red)</b>
Colombo		Seethawaka Divisional Secretariat Division(s) (DSD) and surrounding areas.	Padukka Divisional Secretariat Division(s) (DSD) and surrounding areas.
Galle		Yakkalamulla, Niyagama, Neluwa, Elpitiya, Nagoda and Thawalama Divisional Secretariat Division(s) (DSD) and surrounding areas.	
Hambantota	Katuwana and Okewela Divisional Secretariat Division(s) (DSD) and surrounding areas.	Walasmulla Divisional Secretariat Division(s) (DSD) and surrounding areas.	
Kalutara	Madurawala, Beruwala and Kaluthara Divisional Secretariat Division(s) (DSD) and surrounding areas.	Agalawatta, Walallowita, Horana and Dodangoda Divisional Secretariat Division(s) (DSD) and surrounding areas.	Mathugama, Bulathsinhala, Palindanuwara and Ingiriya Divisional Secretariat Division(s) (DSD) and surrounding areas.
Kandy	Yatinuwara, Ganga Ihala Korale, Udunuwara, Pasbage Korale and Gangawata Korale Divisional Secretariat Division(s) (DSD) and surrounding areas.	Udawalpaya Divisional Secretariat Division(s) (DSD) and surrounding areas.	
Kegalle	Kegalle, Galigamuwa, Aranayaka, Rambukkana, Mawanella and		Yatiyanthota, Ruwanwella, Warakapola, Deraniyagala and Dehiowita

	Bulathkohupitiya Divisional Secretariat Division(s) (DSD) and surrounding areas.		Divisional Secretariat Division(s) (DSD) and surrounding areas.
Kurunegala	Alawwa and Narammala Divisional Secretariat Division(s) (DSD) and surrounding areas.		
Matara	Kirinda Puhulwella, Matara, Weligama, Devinuwara, Thihagoda, Hakmana, Akuressa, Dickwella, Malimbada, Pasgoda, Welipitiya, Athuraliya, Kamburupitiya and Matara Four Gravets Divisional Secretariat Division(s) (DSD) and surrounding areas.	Mulatiyana, Pitabeddara and Kotapola Divisional Secretariat Division(s) (DSD) and surrounding areas.	
Nuwara Eliya	Nuwara Eliya Divisional Secretariat Division(s) (DSD) and surrounding areas.	Ambagamuwa and Kothmale Divisional Secretariat Division(s) (DSD) and surrounding areas.	
Ratnapura	Godakawela, Kahawatta, Kolonna and Weligepola Divisional Secretariat Division(s) (DSD) and surrounding areas.	Balangoda, Openayake and Imbulpe Divisional Secretariat Division(s) (DSD) and surrounding areas.	Eheliyagoda, Ratnapura, Nivithigala, Pelmadulla, Kalawana, Kuruwita, Elapatha, Kiriella and Ayagama Divisional Secretariat Division(s) (DSD) and surrounding areas.

**Note:** ↑shifted one level up, ↑↑shifted two levels up, ↓shifted one level down, ↓↓shifted two levels down.

\*newly added with the last update

Special Note: These warning levels are issued based on the cumulative rainfall received to respective areas and given weather forecast by meteorological department of Sri Lanka

**Areas and places which need special attention**

All mountainous areas, manmade cut slopes and roads within the relevant DS divisions

අදාළ ප්‍රදේශීය ලේකම් කෙට්ටික තුළ පිහිටි කඳුකර බඩුම් හා ආශ්‍රිත ප්‍රදේශ තුළ පිහිටි නිර්මිත

පිරිතේස සෙයලක පිරිවිනුள்ளාන සකල මලෙප්පාභ්කාන පලුතිකල් මඤ්ඤුම වෙද්දප්ද්ද නිලසු සාය්වුකල්

**Specially:** All the landslide susceptible areas previously identified by NBRO.

**විශේෂ:** ජනිත ගෙඩනභිලි පර්සේෂණ සංවිධනය විසින් නඤයඉම් අවදනමක් අති ලෙස පුර්වසෙත් හදුනඉගන අති ප්‍රදේශ

**විසෙදමාක:** ලේසුමුවිනාල් මුන්නර් අදායාලප්දුත්තප්ද්ද මණ්සරිවුක්කාන ඉතනිලෙයුள்ள සකල පිරිතේසභ්කල්.

**විශේෂ සටහන:** කරුණාකර මෙම නායයෑම් පිළිබඳ පූර්ව අනතුරු හැඟවීම් කාලසීමාව තුළ පහත කරුණු වෙත ඔබේ අවධානය යොමු කරන්න.

1. පහත දැක්වෙන නායයෑම් පූර්ව ලක්ෂණ පිළිබඳ සැලකිලිමත් වන්න.
  - පොළවේ ඇති වන ඉරි නැඟීම්, ගැඹුරට හැරුණු පැළුම් හා පොළවේ ගිලා බැසීම්
  - ක්‍රමයෙන් ඇලවී යන ගස්, විදුලි කණු, වැටවල් හා දුරකථන කුළුණු ආදිය
  - ගොඩනැගිලිවල ගෙඩිම හා බිත්තිමත ඇතිවන පිපුරුම් හා ඒවායේ ක්‍රමික වර්ධනය වීම්
  - එක්වර ජල උල්පත් ඇතිවීම හෝ පෙර පැවති ජල උල්පත් බොරවීම, අවහිරවීම හෝ නැතිවීම
2. එවන් නායයාමක පූර්ව ලක්ෂණ දක්නට ලැබෙන ප්‍රදේශ වලින් හැකි ඉක්මනින් ඉවත් වන්න.
3. ඊට අමතරව අනතුරට භාජනය වියහැකි යැයි අනුමාන කරන ප්‍රදේශ වල ජීවත් වන පුද්ගලයින් වැඩි වශයෙන් පරීක්ෂාකාරී වියයුතු අතර දැඩි වර්ෂා තත්වය නවදුරටත් පැවතුනහොත් සුරක්ෂිත ස්ථානයක් කරා ක්ෂණිකව ඉවත්ව යාමට සූදානම්ව සිටිය යුතුය.

**සැ.යු:** ජාතික ගොඩනැගිලි පර්යේෂණ සංවිධානයෙන් සහ ආපදා කළමනාකරණ මධ්‍යස්ථානයෙන් ලැබෙන වැඩිදුර උපදෙස් අනුගමනය කරන්න.

**Special Note:** During this Landslide Early Warning period, please pay attention to the following:

1. Pay your attention to the following pre landslide signs,
  - Development of cracks on the ground, deepened cracks and ground subsidence
  - Slanting of trees, electrical posts, fences and telephone posts
  - Cracks in the floors and walls of buildings which are built at slopes
  - Sudden appearance of springs, emerging muddy water, blockage or disappearance of existing springs
2. People should move immediately away from the areas where they noticed the above pre-landslide signs.
3. Furthermore, people living in landslide susceptible areas should be extra vigilant and should be ready to move quickly to safe places if heavy rain continues.

**Note:** Communities are advised to follow the instructions given by National Building Research Organization and Disaster Management Center.

**විශේෂ குறிப்பு:** மண்சரிவு முன்னெச்சரிக்கை காலப்பகுதியில் பின்வருவனவற்றில் கவனம் எடுக்கவும்

1. பின்வரும் மண்சரிவு முன் அறிகுறிகளையிட்டு கவனத்தை செலுத்தவும்.
  - நிலத்தில் வெடிப்பு உருவாகுதல், ஆழமடங்கும் வெடிப்புகள் மற்றும் தரை உள்ளிறக்கங்கள்.
  - மரங்கள், மின் கம்பங்கள், வேலிகள், மற்றும் தொலைபேசிக் கம்பங்கள் சாய்வடைதல்.
  - சாய்வுகளில் அமைந்துள்ள கட்டிடங்களின் தரைமற்றும் சுவர்களில் வெடிப்புகள் உருவாகுதல்.
  - நிலத்திலிருந்து திடீரென நீர்நீறுகள், சேற்று நீர் தோன்றுதல் மற்றும் தற்போதுள்ள நீர்நீறுகள் தடைப்படுதல் அல்லது இல்லாது போகுதல்.
2. மண்சரிவுக்கு முன்னரான அறிகுறிகளை கொண்ட இடங்களிலிருந்து உடனடியாக மக்கள் அப்பால் நகர வேண்டும்.
3. மேலும், பாதிப்பு ஏதுநிலையுள்ள பகுதிகளில் வாழும் மக்கள் மேலதிக விழிப்புடன் இருக்கவேண்டும் என்பதுடன் கடும் மழை தொருமாயின் விரைவாக பாதுகாப்பான இடங்களுக்கு நகர ஆயத்தமாகவும் இருக்கவேண்டும்.

**குறிப்பு:** தயவுசெய்து தேசிய கட்டிட ஆராய்ச்சி நிறுவனம் மற்றும் அனர்த்த முகாமைத்துவ நிலையம் என்பவற்றின் அறிவுறுத்தல்களை பின்பற்றவும்

Issued by:	Approved by:	
		03-06-2024, 16:00 hrs
Duty Officer	Director - LRRMD	Date and time issued

Landslide Research and Risk Management Division

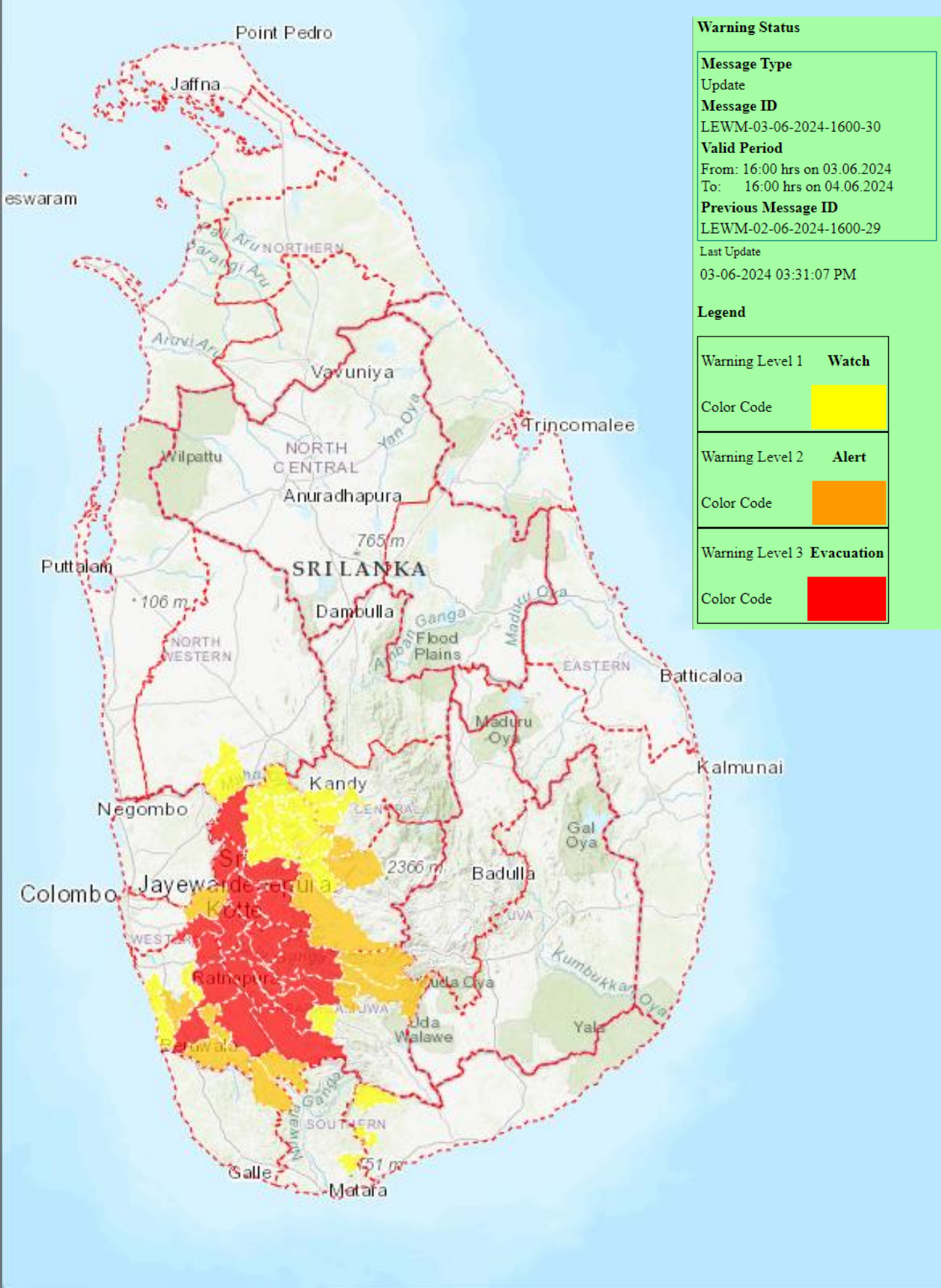
National Building Research Organisation



# Automated Landslide Early Warning Map

Landslide Early Warning Center

National Building Research Organisation, Sri Lanka



**Warning Status**

**Message Type**  
Update

**Message ID**  
LEWM-03-06-2024-1600-30

**Valid Period**  
From: 16:00 hrs on 03.06.2024  
To: 16:00 hrs on 04.06.2024

**Previous Message ID**  
LEWM-02-06-2024-1600-29

Last Update  
03-06-2024 03:31:07 PM

**Legend**

Warning Level 1	<b>Watch</b>
Color Code	
Warning Level 2	<b>Alert</b>
Color Code	
Warning Level 3	<b>Evacuation</b>
Color Code	