



### Locations for Potential Risk

නියමිත අවදානම පවතින හානි ප්‍රදේශ කනතියාන අපායமுள்ள இடங்கள்

District	Level 1 (Yellow)	Level 2 (Amber)	Level 3 (Red)
Colombo		Seethawaka Divisional Secretariat Division(s) (DSD) and surrounding areas.	Padukka Divisional Secretariat Division(s) (DSD) and surrounding areas.
Galle		↑↑ Yakkalamulla, Thawalama, Nagoda, Neluwa, Elpitiya and Niyagama  Divisional Secretariat Division(s) (DSD) and surrounding areas.	
Hambantota	Okewela and Katuwana  Divisional Secretariat Division(s) (DSD) and surrounding areas.	Walasmulla  Divisional Secretariat Division(s) (DSD) and surrounding areas.	
Kalutara	* Beruwala, * Madurawala and * Kaluthara  Divisional Secretariat Division(s) (DSD) and surrounding areas.	Walallawita, ↑ Agalawatta, ↑ Dodangoda and Horana  Divisional Secretariat Division(s) (DSD) and surrounding areas.	Palindanuwara, Mathugama, Bulathsinhala and Ingiriya  Divisional Secretariat Division(s) (DSD) and surrounding areas.
Kandy	Pasbage Korale, Ganga Ihala Korale, Yatinuwara, Gangawata Korale and Udunuwara  Divisional Secretariat Division(s) (DSD) and surrounding areas.	Udawalpaya  Divisional Secretariat Division(s) (DSD) and surrounding areas.	
Kegalle	Rambukkana, Bulathkohupitiya, Mawanella, Galigamuwa, Kegalle and Aranayaka  Divisional Secretariat Division(s) (DSD) and surrounding areas.		↑↑ Ruwanwella, ↑ Dehiowita, ↑ Deraniyagala, ↑↑ Warakapola and ↑↑ Yatiyanthota  Divisional Secretariat Division(s) (DSD) and surrounding areas.

Kurunegala	* Alawwa and * Narammala  Divisional Secretariat Division(s) (DSD) and surrounding areas.		
Matara	* Hakmana, * Devinuwara, * Kamburupitiya, * Welipitiya, * Dickwella, * Matara Four Gravets, * Athuraliya, * Thihagoda, * Weligama, * Matara, * Malimbada, Akuressa, Pasgoda and * Kirinda Puhulwella  Divisional Secretariat Division(s) (DSD) and surrounding areas.	Kotapola, Mulatiyana and Pitabeddara  Divisional Secretariat Division(s) (DSD) and surrounding areas.	
Nuwara Eliya	Nuwara Eliya  Divisional Secretariat Division(s) (DSD) and surrounding areas.	Kothmale and Ambagamuwa  Divisional Secretariat Division(s) (DSD) and surrounding areas.	
Ratnapura	Weligepola, * Godakawela, * Kahawatta and Kolonna  Divisional Secretariat Division(s) (DSD) and surrounding areas.	Imbulpe, Balangoda and Openayake  Divisional Secretariat Division(s) (DSD) and surrounding areas.	Ratnapura, Ayagama, ↑ Pelmadulla, Kuruwita, Elapatha, Nivithigala, Kalawana, Kiriella and Eheliyagoda  Divisional Secretariat Division(s) (DSD) and surrounding areas.

**Note:** ↑shifted one level up, ↑↑shifted two levels up, ↓shifted one level down, ↓↓shifted two levels down.  
\*newly added with the last update  
Special Note: These warning levels are issued based on the cumulative rainfall received to respective areas and given weather forecast by meteorological department of Sri Lanka

**Areas and places which need special attention**  
All mountainous areas, manmade cut slopes and roads within the relevant DS divisions  
අදාළ ප්‍රදේශීය ලේකම් කෙටිකාලීන තුළ පිහිටි කඳුකර බඩුම් හා ආශ්‍රිත ප්‍රදේශ තුළ පිහිටි නිර්මිත  
பிரதேச செயலக பிரிவினாள்ளான சகல மலைப்பாங்கான பகுதிகள் மற்றும் வெட்டப்பட்ட நிலச் சாய்வுகள்



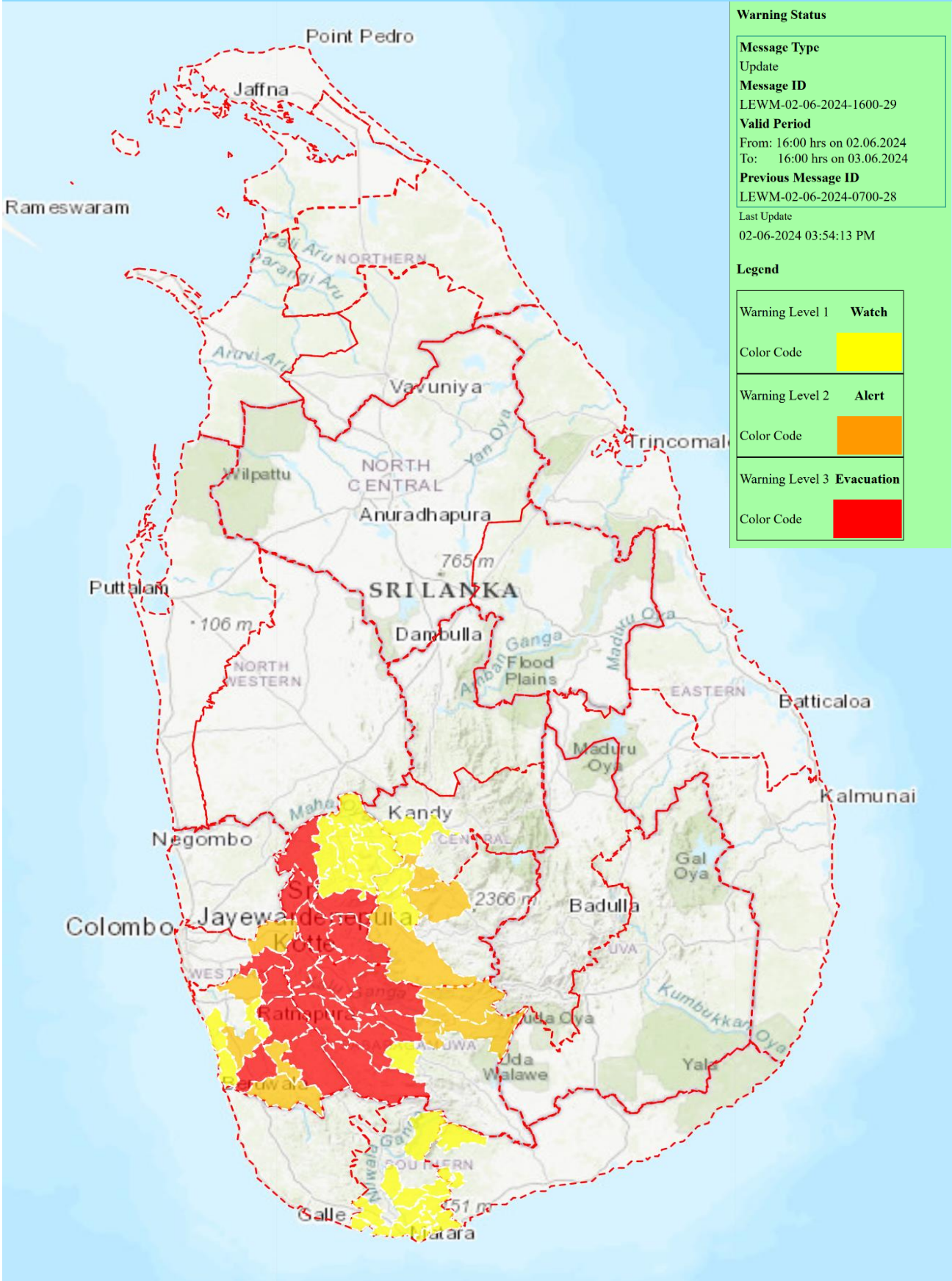




# Automated Landslide Early Warning Map

Landslide Early Warning Center

National Building Research Organisation, Sri Lanka



### Warning Status

#### Message Type

Update

#### Message ID

LEWM-02-06-2024-1600-29

#### Valid Period

From: 16:00 hrs on 02.06.2024  
To: 16:00 hrs on 03.06.2024

#### Previous Message ID

LEWM-02-06-2024-0700-28

Last Update

02-06-2024 03:54:13 PM

### Legend

Warning Level 1 **Watch**

Color Code



Warning Level 2 **Alert**

Color Code



Warning Level 3 **Evacuation**

Color Code

