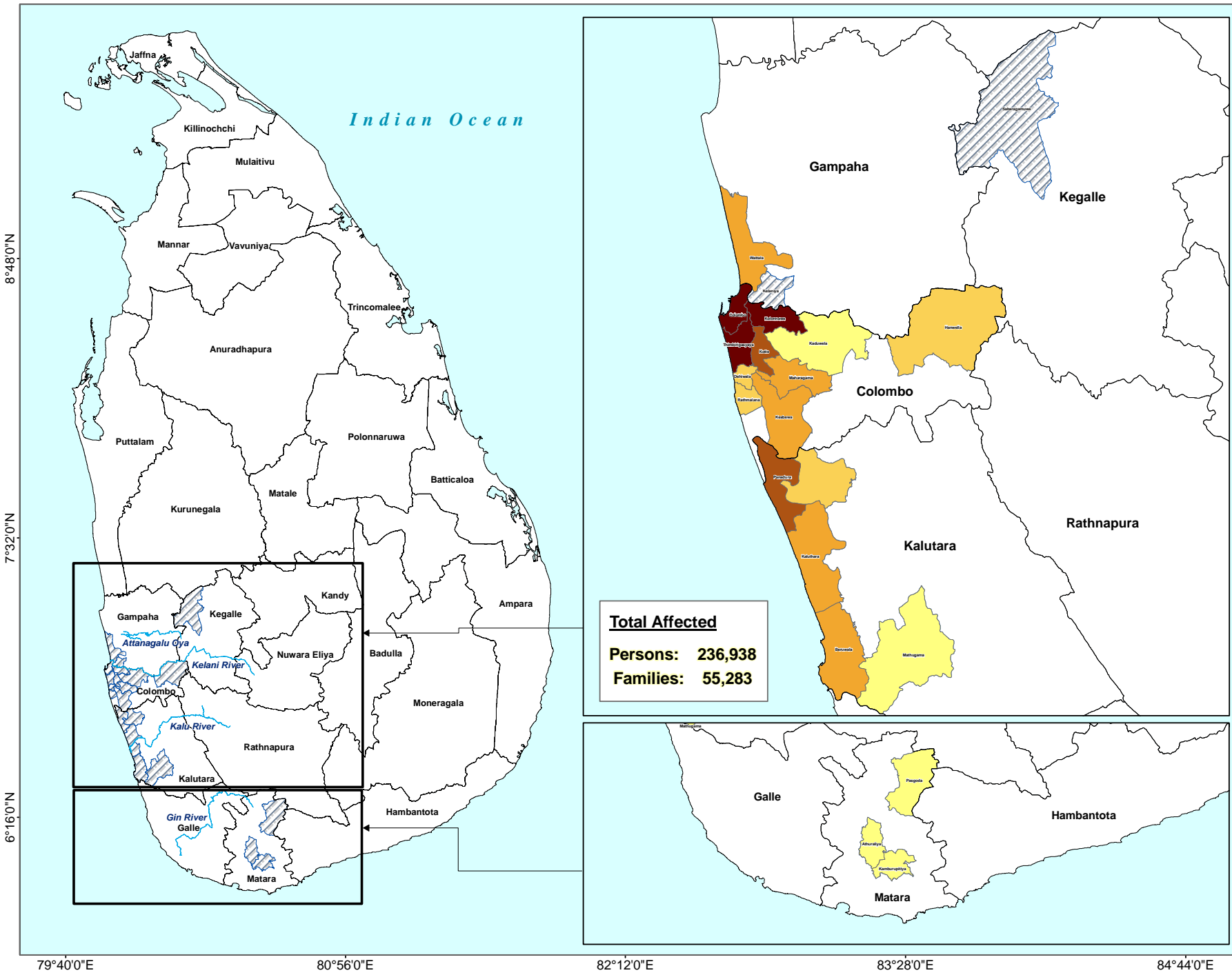


Flood Affected DS Divisions - Sri Lanka

due to heavy rainfall as at 12th November, 2010 at 12:00 Hrs



Legend

Affected Persons

PERSONS

- 1 - 450
- 451 - 4,500
- 4,501 - 8,500
- 8,501 - 20,500
- 20,501 - 62,000

Affected DS Division
 District Boundary
 Waterbody

* Due to changes in the rain and flood inundation levels, affected areas and population will constantly fluctuate.

Map Doc Name:
OCHA/LK/DMC/Flood_SitRep_Nov10/002 / 03

Creation Date: 12 Nov 2010
Projection/Datum:
Transverse Mercator Kandawala

0 50 100
Kilometers

Map data source:
Emergency Operation Center,
Disaster Management Centre, Sri Lanka

Disclaimers:
The boundaries and names shown and the designations used on this map do not imply official endorsement or acceptance by the United Nations.

Disaster Management Centre of Sri Lanka (DMC)
Ministry of Disaster Management

BMIC, Baudhaloka Mawatha, Colombo 7.
Telephone : +94(11) 2670071, Fax : +94(11) 2670048
Website: www.dmc.gov.lk

© 2010 United Nations Office for the Coordination of Humanitarian Affairs, Sri Lanka

202-204, Baudhaloka Mawatha, Colombo 7,
Tel: +94 (11) 4528689, Fax: +94 (11) 4528690,
Email: ochasrilanka@un.org,
Website: www.humanitarianinfo.org/srilanka,
http://ochaonline2.un.org/srilanka

Produced through the generous support of:

