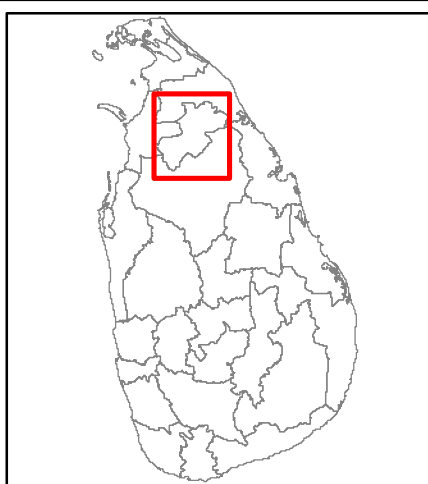
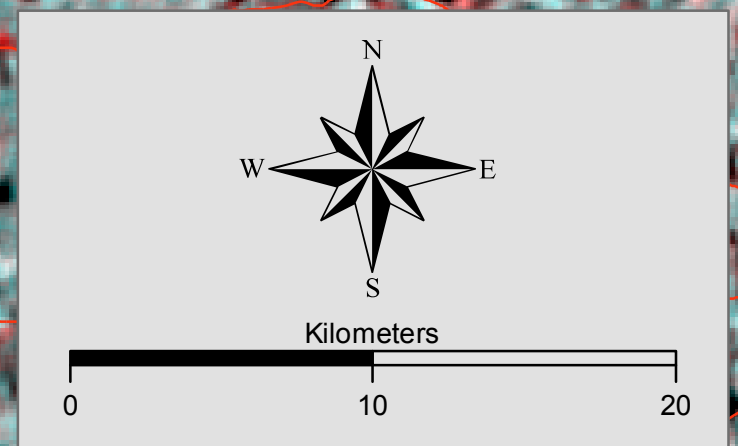
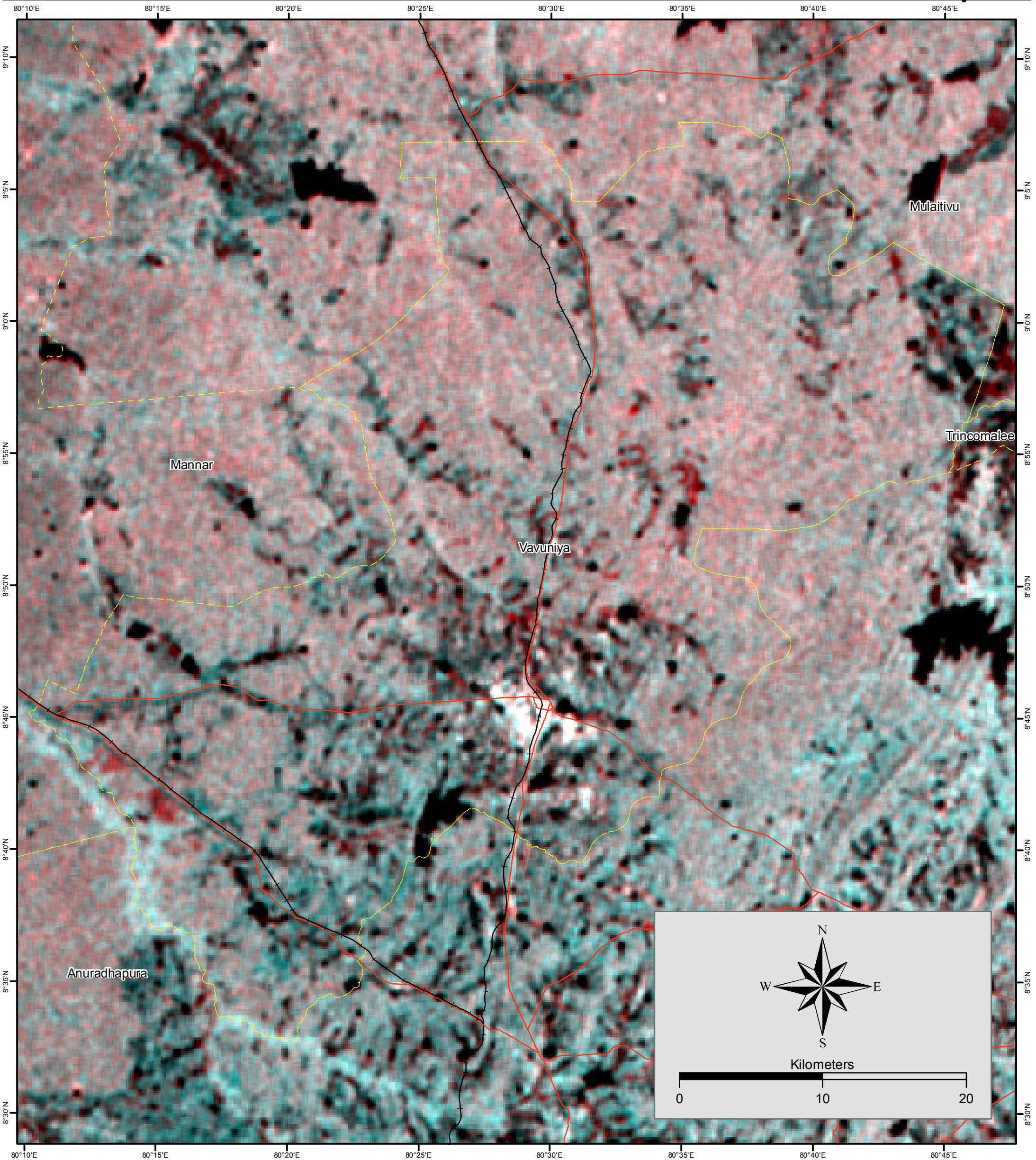


# Flood Inundation Mapping, Vavuniya District, Sri Lanka

Flood Inundation as at 06th February 2011



**Legend**

- Flood Inundation
- Sea
- Main Road
- Rail Road
- District Boundary

|   |  |
|---|--|
| <p>Data Source:<br/>ALOS Palsar 1.5 data products, by<br/>Japanese Aerospace Exploration<br/>Agency (JAXA)</p> <p>Resolution: 100m ground resolution</p> <p>Observation Dates :<br/>Flood Event - 06th February 2011<br/>Pre Flood - 01st January 2009</p> <p>Satellite Activation by:<br/>Sentinel Asia Secretariat with<br/>cooperation of Asian Disaster Reduction<br/>Centre (ADRC)</p> | <p>Base Data:<br/>Department of Survey and Mapping, Sri<br/>Lanka.</p> <p>Map Analyzed by:<br/>GIS Unit of Disaster Management Centre,<br/>Ministry of Disaster Management, Sri<br/>Lanka</p> <p>Version 1.0 - February 2011</p> |
|---|--|